

7. Grotto

After enjoying the Quadrangle proceed up the Chapel steps but before doing so take a seat in the Grotto and relax for a moment.



8. The Chapel

The Chapel forms a key element of the integrated College precinct and was built at the same time as the Original Wing. Within the Chapel there are stained glass windows above the altar that depict

St George, Jesus Christ and St Paul and above the organ loft Bishop Broughton, the first and only Bishop of Australia; St Aidan; St Augustine; St Boniface; and Archbishop Riley (all windows from left to right). The ceiling, pews, panelling and organ case are all made from jarrah.



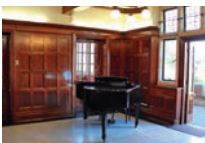
9. Hackett Dining Hall

On leaving the Chapel walk leftwards back to the east side of the Original Wing. The Hackett Dining Hall is on the upper floor and should be entered as instructed by the College administration.

It is one of the most attractive panelled rooms in Australia. No mobile phones should be allowed to ring in the Dining Hall. At meals students 'fill up' the tables, filling the next empty seat. Like the Chapel it is a collegial room. A portrait of Sir Winthrop Hackett hangs over the Donnybrook sandstone fireplace. Past wardens are depicted on the north wall.

10. Upper Foyer

Walk to the Upper Foyer in the South East corner of the Original Wing. Enjoy the views from the balcony and then come down the jarrah main staircase into the Foyer.



11. Foyer

The College crest is set out in the floor. The Foyer also contains the College Pianola. Leave the Foyer into the Quadrangle.

12. Junior Common Room

Immediately on the right is the Junior Common Room where students congregate and enjoy talks, debates and parties.

At St George's College we endeavour to conserve the best of the past, to promote the best of the present, and to seek the best of the future.



St George's College

PERTH - WESTERN AUSTRALIA

St George's College

Mounts Bay Rd
Crawley WA 6009
Telephone +61 8 9449 5555
Fax +61 8 9449 5544
stgeorgescollege.uwa.edu.au



St George's College

PERTH - WESTERN AUSTRALIA

Walking Guide

TO ST GEORGE'S COLLEGE

Welcome to the beautiful grounds and buildings of St George's College. The College was founded through the legacy of Sir Winthrop Hackett, the owner of the *West Australian* newspaper and first Chancellor of The University of Western Australia. He died in 1916 and his will provided for major bequests to the University and to establish an Anglican (Church of England) residential college for the University. This College, St George's, opened in 1931. The site was reputedly selected by the second Chancellor of the University, Archbishop C.O.L. Riley.



1. Gardens

The College gardens are listed by the National Trust of Australia (WA). The Illawarra Flame Tree (or Kurrajong), at the left of the driveway entrance, produces its scarlet bell flowers in late spring. Watch out for them if you are a regular passer-by.



2. Trees

There are three notable oak trees; the first is an English Oak, 15 metres up the drive on your right, which has a canopy spread of 32 metres and a trunk diameter of 1.61 metres. How many of you does it take to hug the tree? (English Oaks can live for more than a thousand years); the second is a Cork Oak, towards the top of the drive on your right (Cork Oaks can live for 250 years and their bark is used for wine bottle corks); and third, to the left of the Chapel viewed from the Quadrangle, is also a Cork Oak.



3. Original Wing

At the top of the drive the Original Wing faces you. The architect was the firm of General Sir Talbot Hobbs, the famous First World War general and veteran of Gallipoli and the Western Front. It is modelled on Selwyn College, Cambridge and is in the late Victorian Gothic style. From the Tower flies the College flag – the Cross of St George to which have been added a red double headed imperial eagle and black swans.



4. Entrance

Entrance to the College is through the Archway through which wonderful views of the grotto and Chapel can be seen to the north and the Swan River to the south.

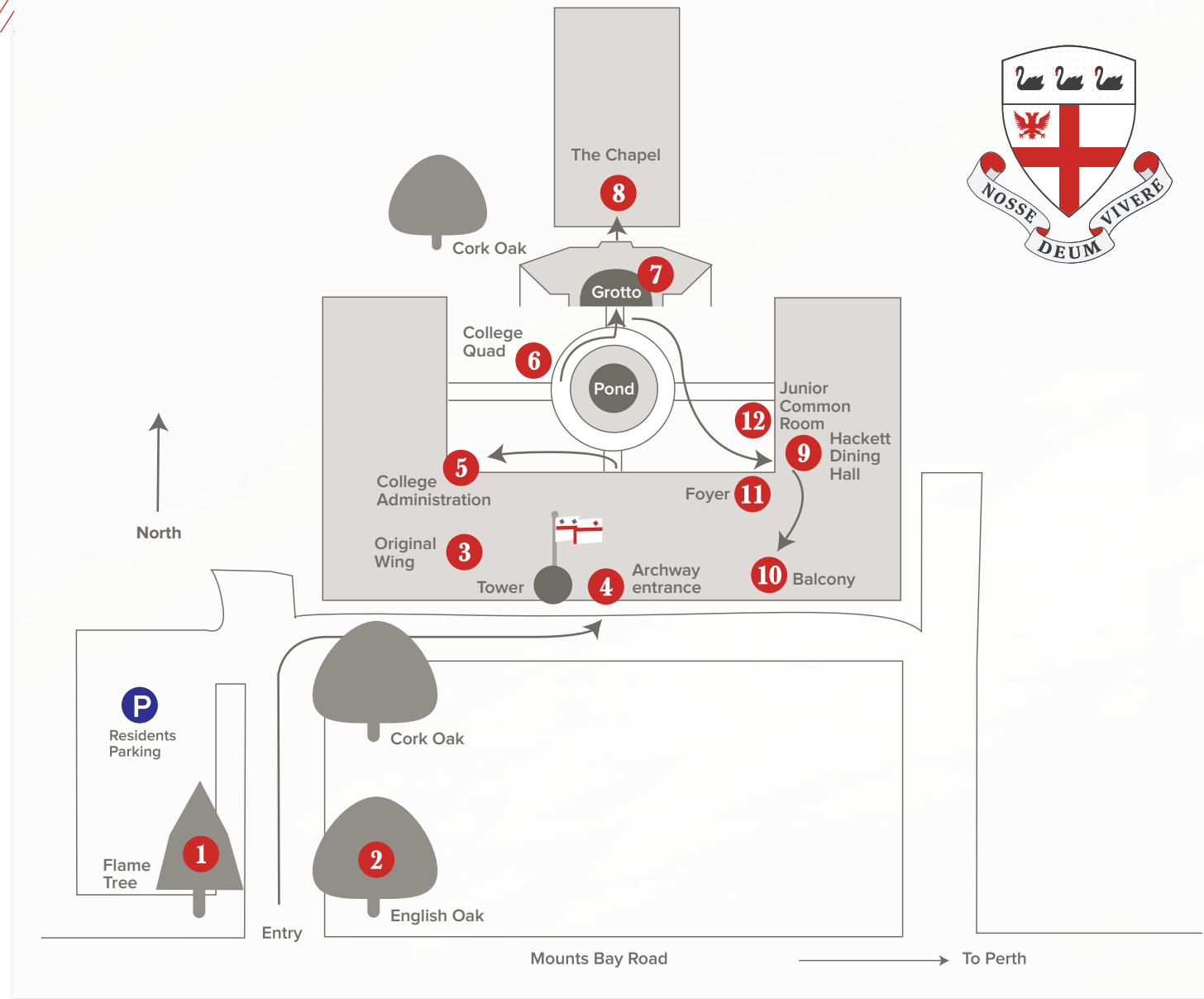
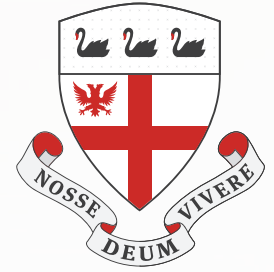
5. College Administration

Turn left and proceed to the College Administration to introduce yourself and to ask to be shown the portrait of the remarkable Lady Hackett in the Blain Room.



6. College Quadrangle

The College Quadrangle reflects the traditional monastic quadrangles that characterise historic colleges and schools worldwide. It is a well-balanced space with the College pond at its centre and is a venue for concerts, plays and parties. Its beauty can be captured in views from the lower cloister, the upper balconies and the Chapel foreground.



Please return to the College Administration before leaving the College.

We hope that you have enjoyed your visit to one of the most architecturally and historically significant set of buildings and gardens in Western Australia. Further details of the College and its history can be found on the College website: stgeorgescollege.uwa.edu.au.

If you would like to make a donation towards the upkeep of the College buildings and gardens, please do so at the Administration Office. Postcards and other items are also available for purchase.